

## **EXECUTIVE SUMMARY**

### **Highlights**

Enrollment at GRCC declined in winter 2016, with a headcount of 14,160. Contact hours and credit hours decreased by 6.5 and 5.8 percent, respectively. The School of Arts and Sciences contact hours decreased 5.9 percent, while the School of Workforce Development contact hours decreased 7.2 percent. The average number of students per section decreased from 22.7 to 22.1. Of the total population, 4,269 (30.1%) of the students are age 25 or older. The number of full-time students was 3,912, 27.6 percent of the total; part-time students numbered 10,248.

### **Key Findings**

#### **Headcount**

- Headcount for winter 2016 was 14,160, 597 fewer students than last winter. (Table 1)

#### **Contact Hours**

- Contact hours for winter 2016 were down 9,072 (6.5 percent) from last winter. (Table 2)

#### **Credit Hours**

- Credit hours for winter 2016 were down 7,147 (5.8 percent) from last winter. (Table 3)

#### **Arts and Sciences/Workforce Development Contact Hours**

- Winter-to-Winter Arts and Sciences contact hours decreased 5.9 percent and Workforce Development contact hours decreased 7.2 percent. (Table 4)
- Arts and Sciences departments with the largest percentage increases in contact hours were Performance Arts (+9.5 percent) and Physical Sciences (+4.3 percent). All other departments had decreases. (Table 6)
- Workforce Development departments with the largest percentage increases in contact hours included Manufacturing (+5.3 percent), Mechanical and Architectural Design (+4.7 percent), and Applied Technology (+3.6 percent). All other departments had decreases. (Table 6)

#### **Total Number of Lecture Sections/Average Number of Students Per Section**

- The total number of lecture sections offered for winter 2016 was 1,657, down 89 from last winter. The average number of students per section decreased to 22.1 (Table 8)

### **Residency Contact Hours**

- The proportion of contact hours for in-district students decreased 0.7 percent; out-of-district students increased 0.5 percent compared to last winter. (Table 9)

### **Residency Headcount**

- Students from KISD made up 73.2 percent of all students (down from 73.8 percent last winter); non-resident students totaled 25.9 percent (up from 25.4 percent); out-of-state students accounted for 0.9 percent (up from 0.8 percent). (Table 10)

### **Retention Rates**

- The retention rate from fall 2015 to winter 2016 for beginning, degree-seeking freshmen was 77.1 percent, up from 76.6 percent in fall 2014 to winter 2015. Full-time degree-seeking students had a return rate of 84.5 percent, an increase of 0.5 percent. (Table 11)

### **Credits by Location and Time**

- Distance learning courses made up 17.4 percent of the total credits. Lakeshore campus credits made up 4.0 percent of the total. (Table 12)

### **Gender**

- Female students comprised 51.3 percent of the total winter enrollment. Males made up 48.7 percent of the student population. (Table 13)

### **Age**

- Students who were age 25 or older totaled 4,269, 30.1 percent of all students; the percentage decreased from 32.0 percent last year. (Table 14)
- The average age of students was 24.5 years, down from 24.9 last year. (Table 15)

### **Ethnicity**

- The total percentage of students from minority populations was 28.2 percent. (Table 16)

### **Full-time Students/Full-time Equivalency**

- The proportion of students who attended GRCC full-time for winter 2016 was 27.6 percent, down from 28.9 percent in winter 2015. (Table 17)
- The full-time equivalent calculation for winter 2016 was 7,328. The average number of credits per student decreased to 8.2 from 8.4 (Table 18)

TABLE OF CONTENTS

	Page
<b>Section 1: Credit Enrollment Report for Winter 2016</b>	
Table 1: Headcount . . . . .	7
Table 2: Contact Hours . . . . .	8
Table 3: Credit Hours . . . . .	9
Table 4: Contact Hours by Program Type. . . . .	10
Table 5: Credit Hours by Program Type. . . . .	11
Table 6: Contact Hours by Department/Program . . . . .	12
Table 7: Credit Hours by Department/Program . . . . .	13
Table 8: Total Number of Lecture Sections/Average Number of Students Per Section . . . . .	14
Table 9: Residency Contact Hours. . . . .	15
Table 10: Residency Headcount . . . . .	16
Table 11: Fall-to-Winter Retention Rates . . . . .	17
Table 12: Credits by Location and Time . . . . .	18
<b>Section 2: Winter Credit Enrollment Data by Demographic Variables</b>	
Table 13: Gender . . . . .	23
Table 14: Age 25 and Older . . . . .	24
Table 15: Average Age of Students . . . . .	25
Table 16: Ethnicity . . . . .	26
Table 17: Full-Time/Part-Time Students . . . . .	27
Table 18: Full-Time Equivalent (FTE)/Average Credits Per Student . . . . .	28
<b>Section 3: Winter 2016 Enrollment Profile . . . . .</b>	<b>29</b>



# Section 1

## Credit Enrollment Report for Winter 2016



**TABLE 1**  
**Headcount for Winter Semesters**

<b>Winter Semester</b>	<b>Winter</b>	<b>% Change</b>
<b>2016</b>	<b>14,160</b>	<b>-4.0</b>
<b>2015</b>	14,757	-6.4
<b>2014</b>	15,767	-7.5
<b>2013</b>	17,040	-2.3
<b>2012</b>	17,448	-3.8
<b>2011</b>	18,142	5.1
<b>2010</b>	17,258	13.7
<b>2009</b>	15,174	1.6
<b>2008</b>	14,935	0.0
<b>2007</b>	14,941	4.9
<b>2006</b>	14,244	2.3

**TABLE 2**  
**Contact Hours for Winter Semesters**

<b>Winter Semester</b>	<b>Number</b>	<b>% Change</b>
<b>2016</b>	<b>131,051.39</b>	<b>-6.5</b>
<b>2015</b>	140,123.62	-9.6
<b>2014</b>	155,033.32	-8.8
<b>2013</b>	169,984.52	-4.0
<b>2012</b>	177,052.14	-5.8
<b>2011</b>	187,938.01	2.1
<b>2010</b>	184,079.14	15.5
<b>2009</b>	159,395.43	2.4
<b>2008</b>	155,590.55	1.0
<b>2007</b>	154,070.56	3.9
<b>2006</b>	148,268.77	1.7



**TABLE 3**  
**Credit Hours for Winter Semesters**

<b>Winter Semester</b>	<b>Number</b>	<b>% Change</b>
<b>2016</b>	<b>116,602</b>	<b>-5.8</b>
<b>2015</b>	123,749	-9.3
<b>2014</b>	136,430	-8.2
<b>2013</b>	148,542	-4.1
<b>2012</b>	154,824	-5.8
<b>2011</b>	164,378	2.5
<b>2010</b>	160,324	15.4
<b>2009</b>	138,959	2.7
<b>2008</b>	135,241	0.8
<b>2007</b>	134,199	4.4
<b>2006</b>	129,487	2.9

**TABLE 4**  
**Contact Hours by Program Type**

Winter Semester	Arts & Sciences		Workforce Development	
	Number	% Change	Number	% Change
<b>2016</b>	<b>87,740.11</b>	<b>-5.9</b>	<b>42,309.28</b>	<b>-7.2</b>
<b>2015</b>	93,257.30	-10.6	45,614.32	-8.7
<b>2014</b>	104,276.46	-11.3	49,977.86	-3.9
<b>2013</b>	117,529.27	-4.8	52,015.25	-1.7
<b>2012</b>	123,469.09	-6.2	52,921.05	-4.7
<b>2011</b>	131,611.08	4.5	55,513.93	-3.2
<b>2010</b>	126,000.54	16.8	57,360.59	12.1
<b>2009</b>	107,841.43	4.5	51,164.00	-2.3
<b>2008</b>	103,201.16	0.9	52,389.39	1.1
<b>2007</b>	102,275.79	5.5	51,794.77	0.9
<b>2006</b>	96,911.88	3.6	51,356.89	-1.7

**TABLE 5**  
**Credit Hours by Program Type**

Winter Semester	Arts & Sciences		Workforce Development	
	Number	% Change	Number	% Change
<b>2016</b>	<b>80,232</b>	<b>-4.9</b>	<b>35,368</b>	<b>-7.2</b>
<b>2015</b>	84,352	-9.9	38,109	-9.4
<b>2014</b>	93,575	-10.6	42,076	-3.2
<b>2013</b>	104,674	-4.6	43,459	-2.1
<b>2012</b>	109,775	-6.1	44,387	-4.8
<b>2011</b>	116,957	4.4	46,608	-2.1
<b>2010</b>	112,012	15.6	47,594	14.2
<b>2009</b>	96,876	4.6	41,693	-2.2
<b>2008</b>	92,604	0.5	42,637	1.3
<b>2007</b>	92,108	5.1	42,091	0.7
<b>2006</b>	87,672	-1.8	41,815	14.1

**TABLE 6**  
**Contact Hours by Department/Program**  
**Winter 2013 to Winter 2016**

	Winter 2013	Winter 2014	Winter 2015	Winter 2016	Percent Change from Last Winter
<b>School of Arts and Sciences</b>					
Biological Sciences	11,386.00	10,599.00	10,440.00	10,200.00	-2.3%
Education/Child Development	3,115.83	2,317.83	2,076.77	1,927.80	-7.2%
English	21,162.60	18,818.13	16,423.71	15,616.45	-4.9%
Exercise Science	4,917.00	4,300.00	3,592.00	3,330.00	-7.3%
Language and Thought	13,950.00	12,471.00	10,306.00	8,501.00	-17.5%
Mathematics	20,122.00	17,896.00	16,734.00	15,361.00	-8.2%
Performing Arts	3,356.00	2,783.00	2,414.00	2,643.00	9.5%
Physical Sciences	10,141.00	8,910.50	8,473.00	8,839.00	4.3%
Psychology	9,297.00	8,214.00	6,754.00	5,969.00	-11.6%
Social Sciences	15,745.00	14,222.00	12,628.00	12,100.00	-4.2%
Visual Arts	4,336.84	3,745.00	3,415.82	3,252.86	-4.8%
<b>Total</b>	<b>117,529.27</b>	<b>104,276.46</b>	<b>93,257.30</b>	<b>87,740.11</b>	<b>-5.9%</b>
<b>School of Workforce Development</b>					
Acct'g./Office Admin./Business	16,332.70	16,101.77	14,673.67	13,349.76	-9.0%
Applied Technology	2,731.50	1,998.50	2,094.81	2,169.95	3.6%
Automotive	1,777.00	1,452.00	1,318.00	1,317.00	-0.1%
Computer Information Systems	6,040.00	5,474.58	4,746.37	4,305.00	-9.3%
Criminal Justice	5,089.00	4,022.00	3,197.00	2,579.00	-19.3%
Culinary Education	5,970.00	6,170.50	5,503.50	4,776.00	-13.2%
Dental Auxiliary Programs	1,970.80	2,065.80	1,963.78	1,902.82	-3.1%
Manufacturing	3,787.68	4,567.24	4,177.07	4,396.96	5.3%
Mechanical & Archt'l Design	2,126.83	2,066.74	2,068.44	2,166.05	4.7%
Nursing Programs	4,314.74	4,234.73	4,099.68	3,737.74	-8.8%
Occupational Therapy Assistant	621.00	654.00	691.00	588.00	-14.9%
Radiologic Technology	1,254.00	1,170.00	1,081.00	1,021.00	-5.6%
<b>Total</b>	<b>52,015.25</b>	<b>49,977.86</b>	<b>45,614.32</b>	<b>42,309.28</b>	<b>-7.2%</b>
<b>Student Success &amp; Retention</b>	436.00	779.00	1,252.00	1,002.00	-20.0%

**TABLE 7**  
**Credit Hours by Department/Program**  
**Winter 2013 to Winter 2016**

	Winter 2013	Winter 2014	Winter 2015	Winter 2016	Percent Change from Last Winter
<b>School of Arts and Sciences</b>					
Biological Sciences	8,702	8,111	7,977	7,843	-1.7%
Education/Child Development	2,798	2,090	1,855	1,710	-7.8%
English	20,531	18,365	16,362	15,705	-4.0%
Exercise Science	2,673	2,402	2,175	2,070	-4.8%
Language and Thought	13,950	12,471	10,306	8,762	-15.0%
Mathematics	18,510	16,594	15,694	14,623	-6.8%
Performing Arts	2,701	2,177	2,036	2,265	11.2%
Physical Science	6,985	6,138	5,785	6,146	6.2%
Psychology	9,297	8,415	6,952	6,389	-8.1%
Social Sciences	15,706	14,410	12,880	12,551	-2.6%
Visual Arts	2,821	2,402	2,330	2,168	-7.0%
<b>Total</b>	<b>104,674</b>	<b>93,575</b>	<b>84,352</b>	<b>80,232</b>	<b>-4.9%</b>
<b>School of Workforce Development</b>					
Accounting/Office Admin/Business	16,241	16,018	14,587	13,293	-8.9%
Applied Technology	1,556	1,352	1,406	1,503	6.9%
Automotive	950	794	726	732	0.8%
Computer Information Systems	5,952	5,433	4,762	4,305	-9.6%
Criminal Justice	4,961	4,021	3,205	2,548	-20.5%
Culinary Education	3,484	3,598	3,063	2,721	-11.2%
Dental Auxiliary Programs	1,433	1,487	1,416	1,390	-1.8%
Manufacturing	2,784	3,427	3,128	3,415	9.2%
Mechanical & Archt'l Design	1,672	1,591	1,599	1,648	3.1%
Nursing Programs	2,716	2,701	2,608	2,327	-10.8%
Occupational Therapy Assistant	575	604	639	552	-13.6%
Radiologic Technology	1,135	1,050	970	934	-3.7%
<b>Total</b>	<b>43,459</b>	<b>42,076</b>	<b>38,109</b>	<b>35,368</b>	<b>-7.2%</b>
<b>Student Success &amp; Retention</b>	436	779	1,288	1,002	-22.2%

**TABLE 8**  
**Total Number of Lecture Sections and**  
**Average Number of Students Per Section\***

<b>Winter Semester</b>	<b>Total Number of Lecture Sections</b>	<b>Average Number of Students Per Section</b>
<b>2016</b>	<b>1,657</b>	<b>22.1</b>
<b>2015</b>	1,746	22.7
<b>2014</b>	1,985	22.0
<b>2013</b>	2,045	23.3
<b>2012</b>	2,111	23.7
<b>2011</b>	2,266	23.7
<b>2010</b>	2,204	23.8
<b>2009</b>	1,853	24.2
<b>2008</b>	1,808	24.2
<b>2007</b>	1,802	24.1
<b>2006</b>	1,711	24.3

\* Starting in Winter 2010, MCCVLC courses were part of regular sections.

**TABLE 9**  
**Contact Hours by Residency**

Winter Semester	Resident		Non-Resident		Out of State	
	Hours	Percent	Hours	Percent	Hours	Percent
<b>2016</b>	<b>96,210.92</b>	<b>73.4</b>	<b>33,502.57</b>	<b>25.6</b>	<b>1,337.90</b>	<b>1.0</b>
<b>2015</b>	103,715.03	74.1	35,236.22	25.1	1,172.37	0.8
<b>2014</b>	116,862.23	75.4	36,777.33	23.7	1,393.76	0.9
<b>2013</b>	128,980.03	75.9	39,583.65	23.3	1,420.84	0.8
<b>2012</b>	136,341.75	77.0	39,422.93	22.3	1,287.46	0.7
<b>2011</b>	144,728.93	77.0	41,772.90	22.2	1,436.18	0.8
<b>2010</b>	142,162.82	77.2	40,687.13	22.1	1,229.19	0.7
<b>2009</b>	121,464.94	76.2	36,982.03	23.2	948.46	0.6
<b>2008</b>	114,709.57	73.7	39,542.58	25.4	1,338.40	0.9
<b>2007</b>	114,162.57	74.1	38,489.13	25.0	1,382.88	0.9

**TABLE 10**  
**Residency Headcount**

Winter Semester	Resident		Non-Resident		Out of State	
	N	Percent*	N	Percent*	N	Percent*
<b>2016</b>	<b>10,362</b>	<b>73.2</b>	<b>3,666</b>	<b>25.9</b>	<b>132</b>	<b>0.9</b>
<b>2015</b>	10,893	73.8	3,751	25.4	113	0.8
<b>2014</b>	11,739	74.5	3,898	24.7	130	0.8
<b>2013</b>	12,826	75.3	4,079	23.9	135	0.8
<b>2012</b>	13,344	76.5	3,984	22.8	120	0.7
<b>2011</b>	13,941	76.8	4,079	22.5	122	0.7
<b>2010</b>	13,325	77.2	3,833	22.2	100	0.6
<b>2009</b>	11,582	76.3	3,502	23.1	90	0.6
<b>2008</b>	11,074	74.1	3,747	25.1	114	0.8
<b>2007</b>	11,123	74.4	3,684	24.7	134	0.9
<b>2006</b>	10,677	75.0	3,411	23.9	156	1.1

\*Percent of total students



**TABLE 11**  
**Fall-to-Winter Retention Rates**  
**for Beginning Degree-Seeking Freshmen in the Fall**

	Percent Continuing					Number Enrolled
	Fall 2011 to Winter 2012	Fall 2012 to Winter 2013	Fall 2013 to Winter 2014	Fall 2014 to Winter 2015	Fall 2015 to Winter 2016	Starting Fall 2015
<b>Female</b>	79.2	76.9	76.2	78.8	<b>80.6</b>	<b>1,294</b>
<b>Male</b>	76.5	75.1	76.9	74.8	<b>75.4</b>	<b>1,551</b>
<b>African-American</b>	66.0	65.4	64.3	69.1	<b>66.9</b>	<b>251</b>
<b>American Indian</b>	64.3	72.0	58.3	65.6	<b>50.0</b>	<b>12</b>
<b>Asian</b>	88.5	79.7	85.6	80.7	<b>88.8</b>	<b>107</b>
<b>Hispanic</b>	78.4	73.0	71.1	74.5	<b>80.6</b>	<b>253</b>
<b>2 or More Races</b>		78.8	65.5	77.7	<b>82.8</b>	<b>116</b>
<b>White</b>	80.4	78.5	79.4	78.3	<b>78.2</b>	<b>2,048</b>
<b>Other</b>	79.9	76.5	81.8	76.1	<b>72.4</b>	<b>58</b>
<b>Age 17-21</b>	80.2	79.1	80.5	78.9	<b>79.6</b>	<b>2,447</b>
<b>Age 22 and older</b>	69.3	64.3	60.7	65.4	<b>66.6</b>	<b>398</b>
<b>Full time</b>	84.0	84.2	84.7	84.0	<b>85.0</b>	<b>1,416</b>
<b>Part time</b>	69.3	65.8	67.1	68.3	<b>70.6</b>	<b>1,429</b>
<b>TOTAL</b>	77.8	75.9	76.5	76.6	<b>77.8</b>	<b>2,845</b>
<b>Arts &amp; Sciences</b>	74.9	81.8	81.6	78.6	<b>79.8</b>	<b>1,897</b>
<b>Workforce Development</b>	78.9	72.4	74.8	74.3	<b>73.7</b>	<b>623</b>
<b>Academic Foundations Program</b>	73.7	72.3	71.7	74.3	<b>74.4</b>	<b>986</b>
<b>CLS 100</b>	83.8	84.2	86.9	79.5	<b>80.8</b>	<b>871</b>

**TABLE 12**  
**Credits by Location and Time**  
 from January 21, 2016

	<b>Downtown Campus</b>	<b>Lakeshore Campus</b>	<b>Other Off-Campus*</b>	<b>Distance Learning</b>	<b>Totals</b>
Day Classes	69,371 59.5%	2,598 2.2%	2,166 1.9%		74,135 63.6%
Evening Classes	17,147 14.7%	2,095 1.8%	1,599 1.4%		20,841 17.9%
Weekend Classes (Start at 5 pm Friday)	759 0.7%				759 0.7%
Independent Study	162 0.1%				162 0.1%
Labs, clinicals, etc.	571 0.5%				571 0.5%
<b>Subtotals (In-Seat Courses)</b>	<b>88,010</b> 75.5%	<b>4,693</b> 4.0%	<b>3,765</b> 3.2%		<b>96,468</b> 82.7%
Hybrid	2,391 2.1%		123 0.1%		2,514 2.2%
Interactive TV	120 0.1%				120 0.1%
Web-Based				17,620 15.1%	17,620 15.1%
<b>Subtotals (Distance Learning)</b>	<b>2,511</b> 2.2%	<b>0</b> 0.0%	<b>123</b> 0.1%	<b>17,620</b> 15.1%	<b>20,254</b> 17.4%
<b>Totals</b>	<b>90,401</b> 77.5%	<b>4,693</b> 4.0%	<b>3,888</b> 3.3%	<b>17,620</b> 15.1%	<b>116,602</b> 100.0%

\* Off-Campus classroom locations:

<b>Off-Campus Location</b>	<b>Credits</b>	<b>Percent of Total</b>
Rockford	659	18%
Wyoming	612	16%
Byron Center	595	16%
Grandville	426	11%
Cedar Springs	168	4%
Kent Innovation	144	4%
East Kentwood	138	4%
Comstock Park	126	3%
Godfrey-Lee	117	3%
Ottawa HS	99	3%
Kent City	96	3%

<b>Off-Campus Location</b>	<b>Credits</b>	<b>Percent of Total</b>
Forest Hills North	78	2%
Northview	75	2%
Lowell	72	2%
Kelloggsville	66	2%
Godwin Heights	60	2%
Union	54	1%
Grand River Prep	52	1%
Univ Prep Academy	51	1%
Wellspring Prep	44	1%
GR Innovation Central	33	1%
<b>Total</b>	<b>3,765</b>	





Section 2  
Winter Credit Enrollment Data  
by Demographic Variables



**TABLE 13**  
**Winter Enrollment by Gender**

<b>Winter Semester</b>	<b>Number of Males</b>	<b>% Male*</b>	<b>Number of Females</b>	<b>% Female*</b>
<b>2016</b>	<b>6,902</b>	<b>48.7</b>	<b>7,258</b>	<b>51.3</b>
<b>2015</b>	7,279	49.3	7,478	50.7
<b>2014</b>	7,660	48.6	8,106	51.4
<b>2013</b>	8,121	47.7	8,919	52.3
<b>2012</b>	8,276	47.4	9,172	52.6
<b>2011</b>	8,771	48.3	9,371	51.7
<b>2010</b>	8,414	48.8	8,844	51.2
<b>2009</b>	7,417	48.9	7,757	51.1
<b>2008</b>	7,237	48.5	7,698	51.5
<b>2007</b>	7,241	48.5	7,700	51.5
<b>2006</b>	6,916	48.6	7,328	51.4

\*Percent of total students

**TABLE 14**  
**Winter Enrollment -- Age 25 and Older**

<b>Winter Semester</b>	<b>Number</b>	<b>Percent*</b>
<b>2016</b>	<b>4,269</b>	<b>30.1</b>
<b>2015</b>	4,719	32.0
<b>2014</b>	5,326	33.8
<b>2013</b>	6,206	36.4
<b>2012</b>	6,476	37.1
<b>2011</b>	6,785	37.4
<b>2010</b>	6,247	36.2
<b>2009</b>	5,000	33.0
<b>2008</b>	4,809	32.2
<b>2007</b>	4,833	32.3
<b>2006</b>	4,485	31.5

\*Percent of total students



**TABLE 15**  
**Average Age of Students**

<b>Winter Semester</b>	<b>Average Age</b>
<b>2016</b>	<b>24.5</b>
<b>2015</b>	24.9
<b>2014</b>	25.4
<b>2013</b>	25.9
<b>2012</b>	26.1
<b>2011</b>	26.1
<b>2010</b>	25.8
<b>2009</b>	25.2
<b>2008</b>	25.3
<b>2007</b>	25.2
<b>2006</b>	25.1

**TABLE 16  
Winter Enrollment by Ethnicity  
Headcounts and Percent of All Students**

Winter	African-American		Native American		Asian		Hispanic		2 or More Races *		White		Inter-national		Unknown	
	N	%	N	%	N	%	N	%	N	%	N	%	N	%	N	%
<b>2016</b>	1325	9.4	94	0.7	578	4.1	1670	11.8	332	2.3	9606	67.8	46	0.3	509	3.6
<b>2015</b>	1556	10.6	99	0.7	526	3.6	1523	10.3	255	1.7	10,055	68.1	46	0.3	697	4.7
<b>2014</b>	1764	11.2	120	0.8	524	3.3	1419	9.0	123	0.8	10,847	68.8	47	0.3	923	5.8
<b>2013</b>	2142	12.6	140	0.8	512	3.0	1357	8.0	30	0.2	11,801	69.2	41	0.2	1017	6.0
<b>2012</b>	2492	14.3	165	0.9	507	2.9	1370	7.9			11,991	68.7	30	0.2	893	5.1
<b>2011</b>	2665	14.7	182	1.0	501	2.8	1398	7.7			12,729	70.2	33	0.2	634	3.4
<b>2010</b>	2463	14.3	195	1.1	479	2.8	1294	7.5			12,464	72.2	33	0.2	330	1.9
<b>2009</b>	1880	12.4	160	1.1	417	2.7	1086	7.2			11,251	74.1	28	0.2	352	2.3
<b>2008</b>	1747	11.7	147	1.0	427	2.9	992	6.6			11,258	75.4	31	0.2	333	2.2
<b>2007</b>	1692	11.3	144	1.0	387	2.6	941	6.3			11,438	76.5	38	0.3	301	2.0
<b>2006</b>	1512	10.6	133	0.9	355	2.5	844	5.9			11,055	77.7	73	0.5	272	1.9

\*In Winter 2016, added 2 or More Races; recalculated enrollment in 2013 to 2015.

**TABLE 17**  
**Winter Enrollment for Full-time/Part-time Students**

Winter Semester	Full Time (12 or more credits)		Part Time (Less than 12 credits)	
	Number	Percent*	Number	Percent*
<b>2016</b>	<b>3,912</b>	<b>27.6</b>	<b>10,248</b>	<b>72.4</b>
<b>2015</b>	4,260	28.9	10,497	71.1
<b>2014</b>	4,847	30.7	10,920	69.3
<b>2013</b>	5,490	32.2	11,550	67.8
<b>2012</b>	6,014	34.5	11,434	65.5
<b>2011</b>	6,800	37.5	11,342	62.5
<b>2010</b>	7,294	42.3	9,964	57.7
<b>2009</b>	6,146	40.5	9,028	59.5
<b>2008</b>	5,999	40.2	8,936	59.8
<b>2007</b>	5,971	40.0	8,970	60.0
<b>2006</b>	5,781	40.6	8,463	59.4

\* Percent of total students

**TABLE 18**  
**Winter Semester Average Credits Per Student**  
**and Full Time Equivalent (FTE)**

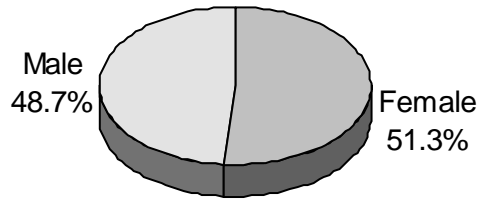
<b>Winter Semester</b>	<b>Headcount</b>	<b>Total Credit Hours</b>	<b>Average Credits per Student</b>	<b>FTE*</b>
<b>2016</b>	<b>14,160</b>	<b>116,602</b>	<b>8.2</b>	<b>7,328</b>
<b>2015</b>	14,757	123,749	8.4	7,759
<b>2014</b>	15,767	136,430	8.7	8,487
<b>2013</b>	17,040	148,542	8.7	9,340
<b>2012</b>	17,448	154,824	8.9	9,825
<b>2011</b>	18,142	164,378	9.1	10,581
<b>2010</b>	17,258	160,324	9.3	10,615
<b>2009</b>	15,174	138,959	9.2	9,155
<b>2008</b>	14,935	135,241	9.1	8,978
<b>2007</b>	14,941	134,199	9.0	8,961
<b>2006</b>	14,244	129,487	9.1	8,602

\*The Full Time Equivalent count is found by dividing part-time students by 3 and adding in the full-time students

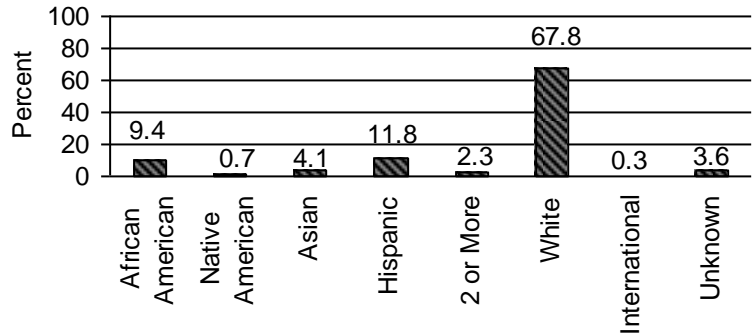
**Section 3**  
**Winter 2016 Enrollment Profile**



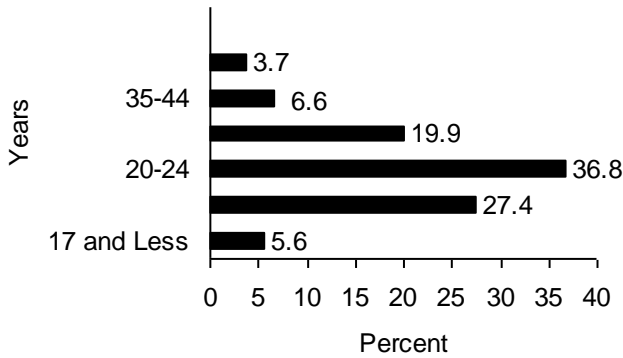
**Gender**



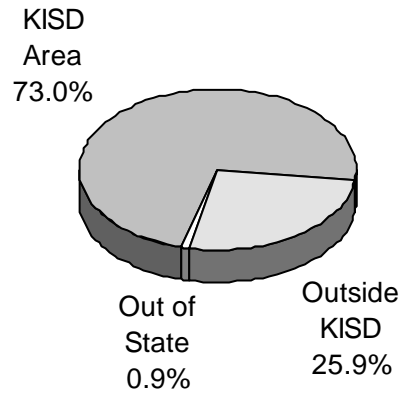
**Ethnicity**



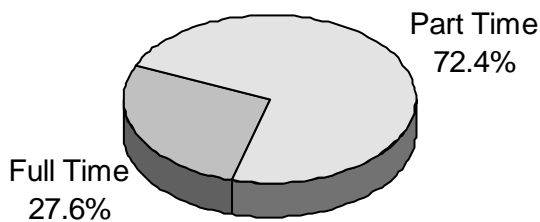
**Age**



**Residency**



**Status**



**Average Number of Credits Enrolled**

